



FOR YOUTH DEVELOPMENT®  
FOR HEALTHY LIVING  
FOR SOCIAL RESPONSIBILITY

# CAMP HIAWATHA & RETREAT CENTER

RENTAL GUIDE

# ABOUT CAMP HIAWATHA & RETREAT CENTER

Founded in 1934, Camp Hiawatha is a cherished Wichita landmark with a rich history that has touched the hearts of generations.

The beloved property was acquired by the Greater Wichita YMCA in 2023. It spans 42 acres of beautiful natural surroundings, providing a perfect setting for Y youth summer day camps starting in 2024. Y camps are all about helping children learn life skills, try something new, and make new friends. With a diverse range of activities, facilities and amenities, it's a place for kids to build a strong foundation for the future.

In addition to be a place for youth, Camp Hiawatha is also available for rental by community groups. It's a fantastic space for gatherings, team building and outdoor events that allow people to get away and connect with each other.

From summer camp to community rentals, Camp Hiawatha's unique blend of nature and proximity to Wichita is something everyone can enjoy!

## CONTACT ABOUT RENTAL

Call 316.776.8777  
[camp.rentals@ymcawichita.org](mailto:camp.rentals@ymcawichita.org)







## EVENT RESOURCES, IDEAS & ACTIVITIES

Here at the Camp Hiawatha and Retreat Center, we are committed to helping you plan and carry out your event with excellence. We have several programming options available to enhance your experience. Many of these activities are self directed and can be done at your leisure during your stay at Camp. A few of our available activities require leadership by the Hiawatha staff, and in such case, it will be noted below.

### CLIMBING TOWER WITH ZIP LINES

Our 32 ft. - 4-sided climbing tower offers several different challenge options on two zip lines for tandem high flying thrills. Hiawatha staff required.

### PROBLEM SOLVING & TEAM BUILDING INITIATIVES

We have developed several different group activities which are designed to develop and strengthen relationships, leadership skills, teamwork, problem solving, trust, and communication skills. These activities will challenge groups to grow together emotionally and relationally through mutual encouragement and support while the group accomplishes tasks which, at first glance, appear near impossible! Cost varies according to group size and length of activity time. Hiawatha staff required.

### ARCHERY

For your safety, we do require that this activity be led by our trained staff. Cost varies according to group size and length of activity time. Hiawatha staff required.

### ARCHERY TAG®

Intense enough for thrill seekers and safe enough for kids to play; making this game the most fun you'll ever have with a bow and arrow! Hiawatha staff required.

\$150 for first hour

\$100 for each additional hour

### SWIMMING POOL WITH WATER SLIDE

During the warm summer months (Memorial Day to Labor Day weekend), our guests are invited to cool off in our amazing pool with water slide. Private pool parties are available at \$150/hour at a two-hour minimum. Lifeguards are provided for private parties and must be on duty anytime the pool is occupied.

### INDOOR SPORTS - BASKETBALL, VOLLEYBALL, DODGE BALL, WIFFLEBALL

Gym rental required. Hourly rates may be available for sports activities.

### SAND PIT VOLLEYBALL

150 tons of sand and a beautiful Kansas summer day makes this a popular camp activity.

### DISC GOLF

This up and coming sport is big fun and a great way to enjoy the outdoors. Bring your own discs or use ours.

### CAMPFIRE

A classic camp activity. Roasting sticks provided at no cost, s'mores \$3/person.

### FREE ACTIVITIES INCLUDE:

- **HIKING ON NATURE TRAIL**
- **PICNIC**
- **HORSESHOES**
- **GAGA BALL**
- **9 SQUARE IN THE AIR**
- **FRISBEE**
- **TETHERBALL**
- **OUTDOOR BASKETBALL**
- **SPORTS FIELDS** for kickball, wiffleball, soccer, and football
- **AND MORE!**



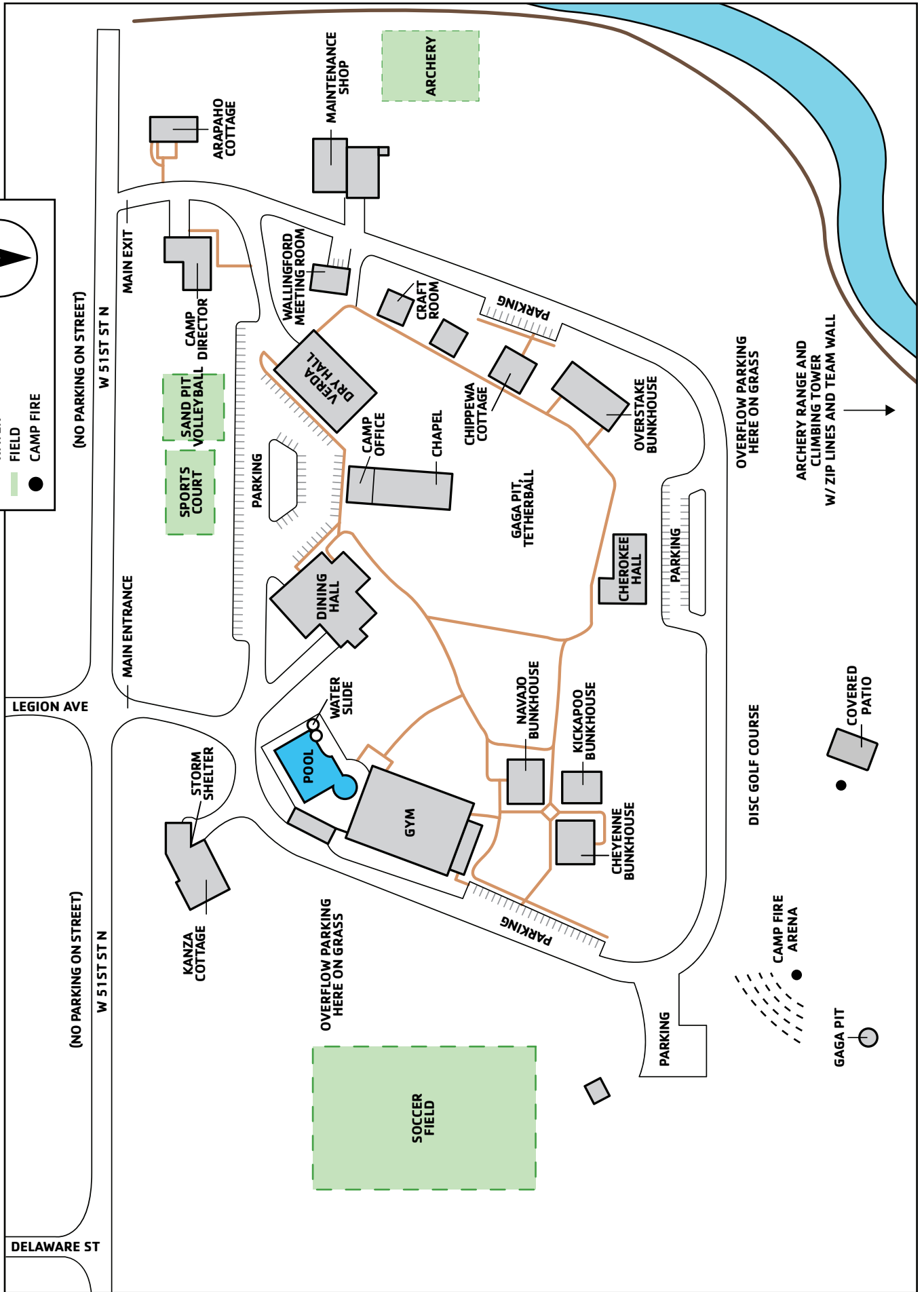
# GREATER WICHITA YMCA HIAWATHA CAMP & RETREAT CENTER

1601 W. 51st St. N.  
Wichita, KS 67204

316.776.8777

**KEY**

- BUILDING/STRUCTURE
- PATH
- TRAIL
- WATER
- FIELD
- CAMP FIRE

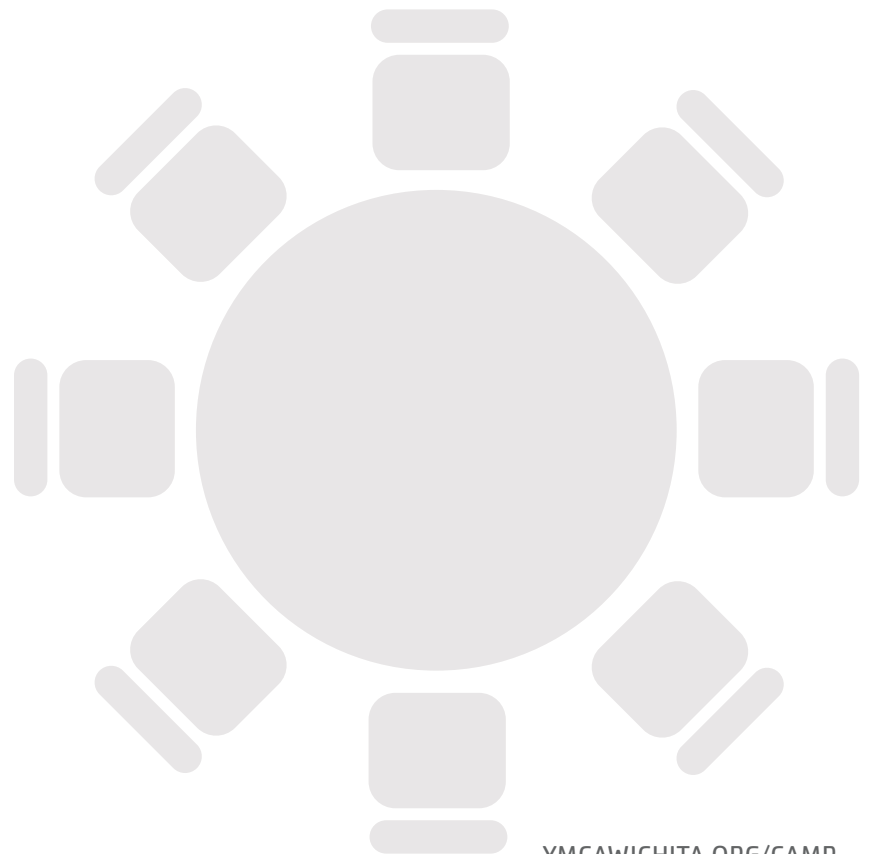




FOR YOUTH DEVELOPMENT®  
FOR HEALTHY LIVING  
FOR SOCIAL RESPONSIBILITY

**CAMP HIAWATHA & RETREAT CENTER**

# **INDOOR MEETING SPACES**





# OLIVE ANN BEECH HALL

## HIGHLIGHTS

- Seats 250
- Handicap accessible
- Dedicated parking
- Commercial kitchen
- Zoned central heating and air
- Fireplace
- Restrooms
- Sound system
- Wifi

## AMENITIES

- Charming covered front porch with easy handicap access and ample parking
- Vaulted ceilings with rustic wood beams
- Wood burning fireplace
- Covered back porch for care-free grilling in any weather
- Zoned central heating and air for total comfort
- Seats 250 with 32 - 60" round tables, 8 - 8' rectangular tables, and plush folding chairs, 300 with chairs only
- Welcoming entry foyer with restrooms
- Full commercial kitchen with state-of-the-art equipment and cookware that includes walk-in cooler, walk-in freezer, and commercial ice maker
- Cafeteria style serving room with food warmers
- Room divider available





## VERDA DRY HALL

### HIGHLIGHTS

- Seats 200
- Handicap accessible
- Dedicated parking
- Warming Kitchen
- Central heating and air
- Restrooms
- Wifi

### AMENITIES

- Charming covered front porch with easy handicap access and ample parking
- Spacious main hall with vaulted ceilings
- Seats 200 with 25 - 60" round tables with plush folding chairs
- Kitchen with electric range, double oven, microwave oven, commercial refrigerator, commercial dishwasher
- Central heating and air
- Speaker's podium available
- Ample lighting



## CHEROKEE HALL

### HIGHLIGHTS

- Seats 100
- Handicap accessible
- Dedicated parking
- Commercial Kitchen
- Central heating and air
- Fireplace
- Restrooms
- Wifi

### AMENITIES

- Rustic charm with modern amenities
- Heart warming hardwood floors and stone, wood burning fireplace
- Seats 100 with 12 - 60" round tables, 4 - 6' rectangular tables
- Non-grease kitchen with six-burner range, double oven and griddle; commercial refrigerator, dishwasher and ice maker
- Stocked with cookware and dinnerware
- Outdoor grill



# GYMNASIUM/MULTI-PURPOSE ROOM

## HIGHLIGHTS

- Seats 600
- Handicap accessible
- Dedicated parking
- Kitchenette
- Zoned central heating and air
- Locker rooms
- Sound system
- Wifi

## AMENITIES

- Impressive styling with large covered porch overlooking main area of camp
- Massive floor space
- Seats 500 with table and chairs or 600 auditorium; includes 39 - 60" round tables, 12 - 6 " rectangular chairs, 340 folding chairs
- Full glass doors and upper windows for natural lighting
- Four mobile, adjustable basketball goals and volleyball net
- Acoustic friendly
- Kitchenette equipped with commercial refrigerator, microwave and ice maker
- Men's and Women's locker rooms with showers, lockers and dressing benches
- Zoned central heating and cooling for total comfort





# CHAPEL

## HIGHLIGHTS

- Seats 250
- Handicap accessible
- Dedicated parking
- Zoned central heating and air
- Restrooms
- Wifi

## AMENITIES

- Centrally located, ample parking and handicap accessible
- Large chapel seats up to 250 with folding chairs and 25 - 6' rectangular tables
- Large raised stage
- Abundant natural light
- Zoned central heating and cooling for total comfort



# WALLINGFORD MEETING ROOM

## HIGHLIGHTS

- Seats 50
- Handicap accessible
- Dedicated parking
- Kitchenette
- Fireplace
- Heating and cooling
- Restrooms
- Wifi

## AMENITIES

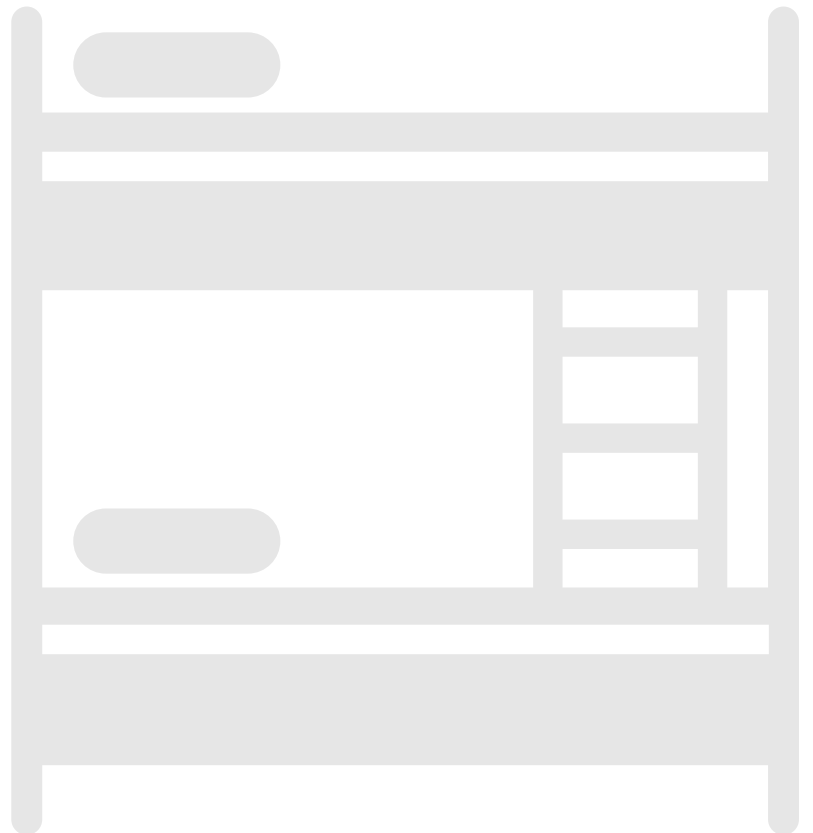
- Quaint exterior with dedicated parking, handicap accessible
- Perfect setting for business meetings, training events or family gatherings
- Kitchenette features refrigerator with freezer, microwave oven and coffee maker
- 10 classroom size tables, 50 folding chairs
- Beautiful stone fireplace
- Heating and cooling units



FOR YOUTH DEVELOPMENT®  
FOR HEALTHY LIVING  
FOR SOCIAL RESPONSIBILITY

CAMP HIAWATHA & RETREAT CENTER

# BUNKS HOUSES & COTTAGES







## OVERSTAKE BUNK HOUSE

### HIGHLIGHTS

Sleeps 30  
3-rooms  
10 beds per room  
1 Full bath per room  
Central eating and cooling

### AMENITIES

- Three spacious dorm style rooms, each with 10 beds and a full bath
- Each full bath features tile flooring and a shower
- Central heat and cooling for total comfort
- Carpeted floors
- Built-in shelving for storage of personal items



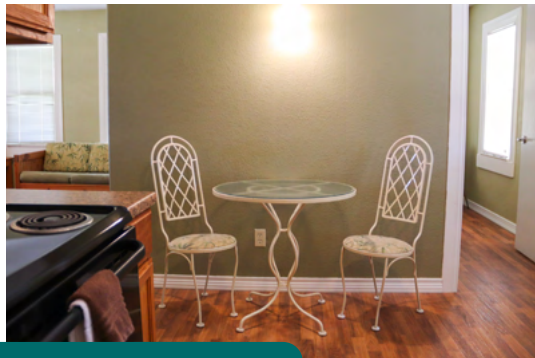
## BUNK HOUSES

### HIGHLIGHTS

Sleeps 32  
4-rooms  
8 beds per room  
1 Full bath per room  
Handicap accessible  
Central eating and cooling

### AMENITIES

- Classic camp design with log siding and covered entry porches
- Each bunk house features four rooms, each room offers eight beds and a full bath
- Bathrooms feature tiled floor and handicap accessible showers
- Wooden bunk beds with hypoallergenic mattresses
- Built-in storage for handy storage of personal items
- Central heating and air conditioning for year round comfort
- Two sides of each cabin are completely secure from each other, connecting doors between two rooms on each side allow for maximum versatility



# CHIPPEWA COTTAGE

## HIGHLIGHTS

- Sleeps 6
- Two bedrooms
- Full kitchen
- Full bath
- Living area
- Dining area
- Handicap accessible
- Wifi

## AMENITIES

- Charming cottage with wrap around covered porch
- Inviting living room with two couches and several windows overlooking camp
- Sleeping accommodations for six, eight with use of couches
- Full kitchen with electric range, microwave and mini-fridge
- Quaint dining area and all new interior finishing
- Main bedroom with queen size bed and dresser and abundant natural light
- Second bedroom comfortably sleeps four with closet and book for storage of personal items
- Full bath with shower and pedestal sink
- Bed linens and towels provided





# ARAPAHO COTTAGE

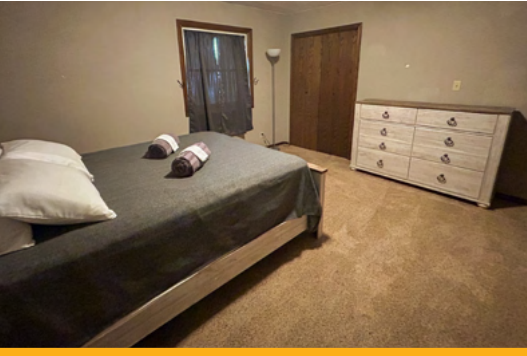
## HIGHLIGHTS

**Sleeps 12**  
**Four bedrooms**  
**Full kitchen**  
**2 Full baths**  
**2 Living areas**  
**Central heating and air**  
**Wifi**

## AMENITIES

- Large shaded front porch with patio furniture
- Two living areas, one with wood burning fireplace
- Well equipped kitchen with electric range, microwave, dishwasher and full refrigerator
- 4-bedrooms with sleeping accommodations for 12
- Full kitchen with quality fixtures and equipment
- Two full baths, each with shower over tub and full vanity
- Central heating and air for total comfort
- Vaulted ceilings with ceiling fans
- Bed linens and towels provided





# KANZA COTTAGE

## HIGHLIGHTS

- Sleeps 20+**
- 6 bedrooms**
- 3.5 Baths**
- Full kitchen**
- 2 Large living areas w/ fireplaces**
- Large dining area**
- Game room**
- Wifi**

## AMENITIES

- Warm and inviting ranch style house overlooking camp property
- Sleeping accommodations for 20+
- Two spacious and open living rooms
- Well equipped kitchen with gas range, microwave, dishwasher and full refrigerator
- Main bedroom has full bed and full bathroom
- Abundant natural light
- Central heating and air conditioning for total comfort
- Large game room with fireplace located in the basement
- Bed linens and towels provided